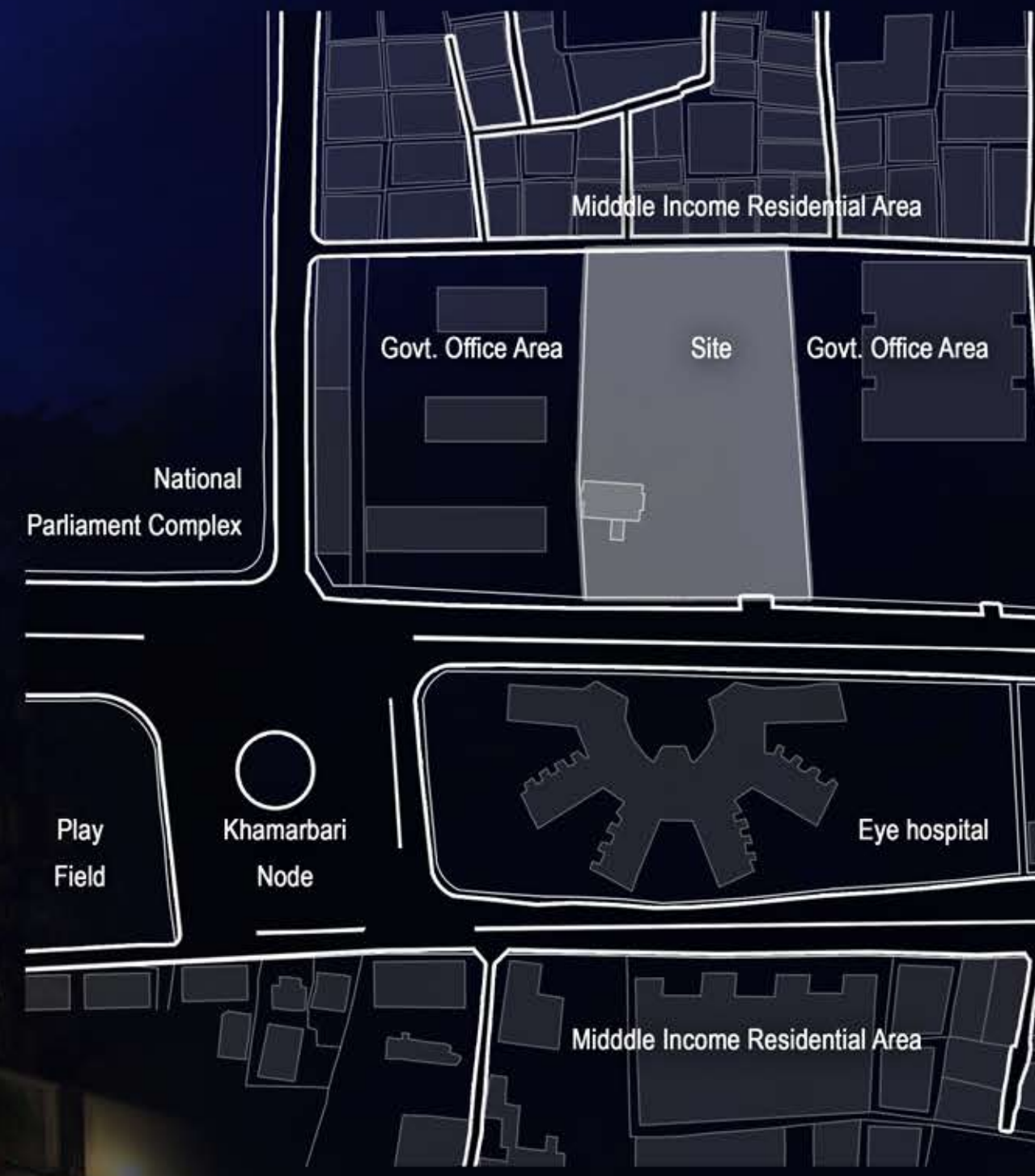


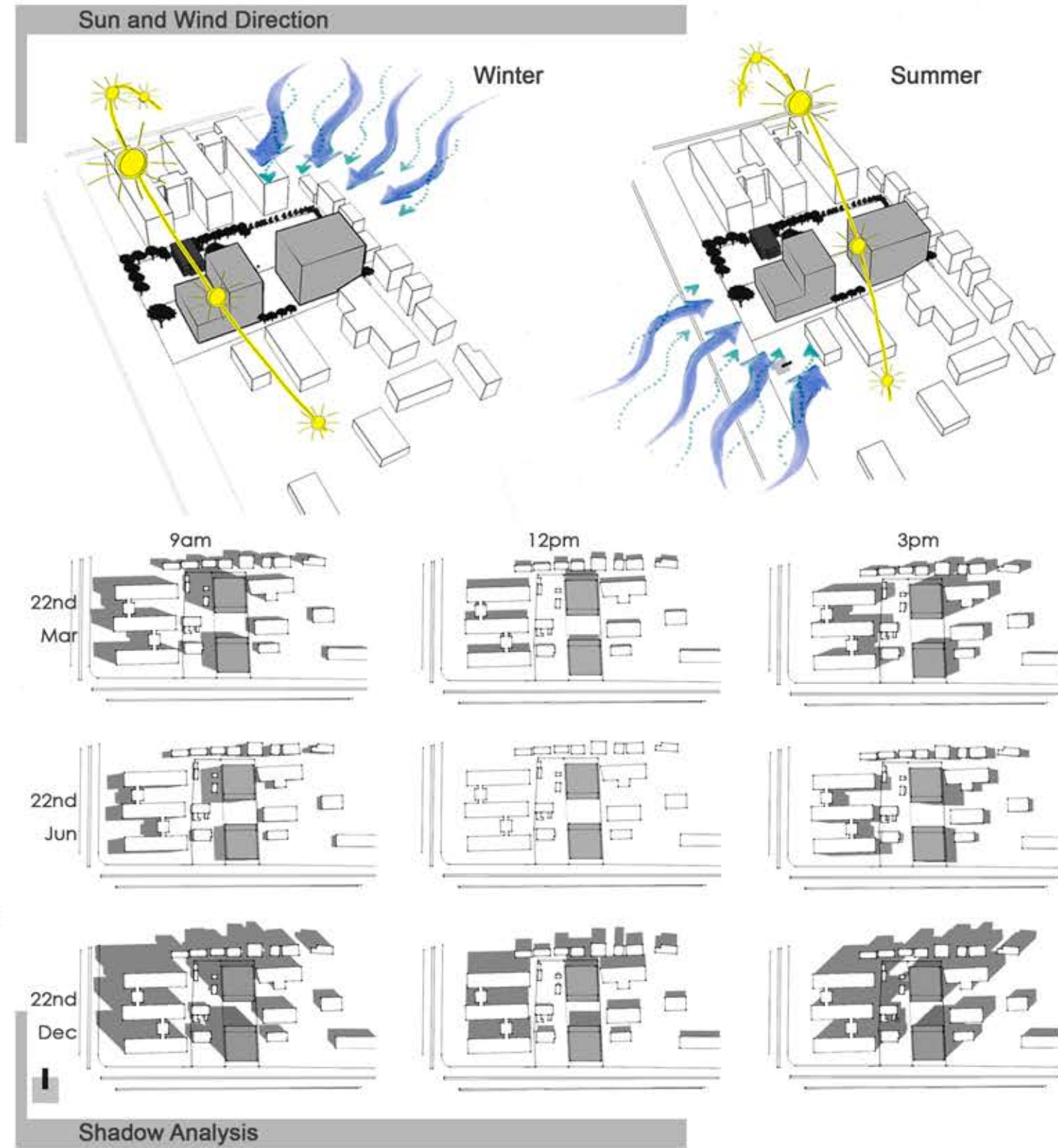
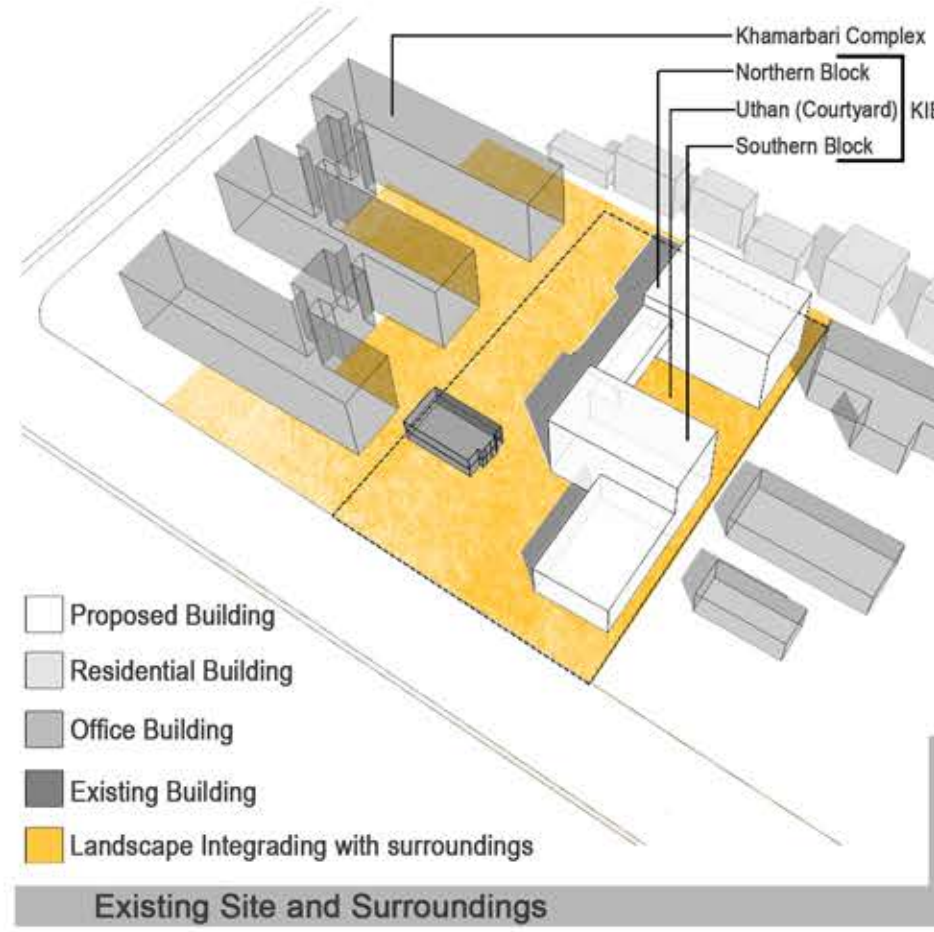
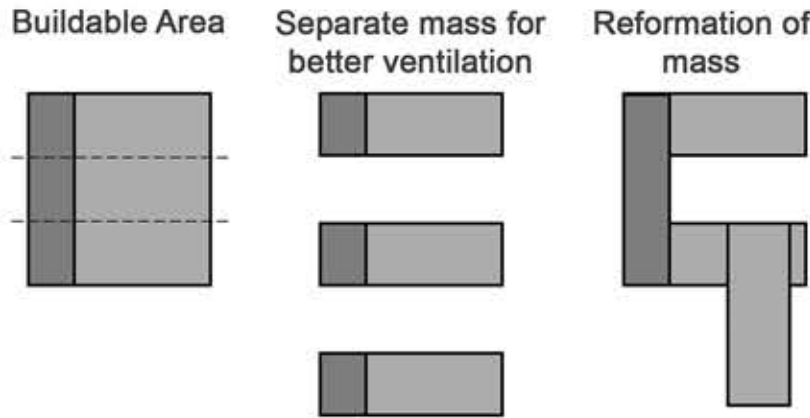


The Krishibid Institution Bangladesh is situated at the heart of Dhaka within the vicinity of most significant architectural display in Bangladesh "The Parliament Complex" designed by master architect Louis I. Kahn. The site justifiably contains a legacy of clear obligation to the surrounding.

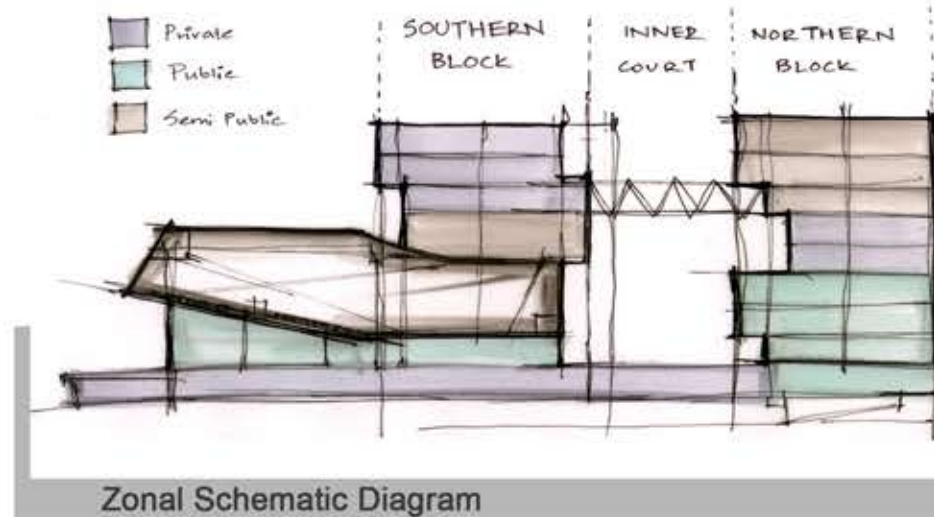
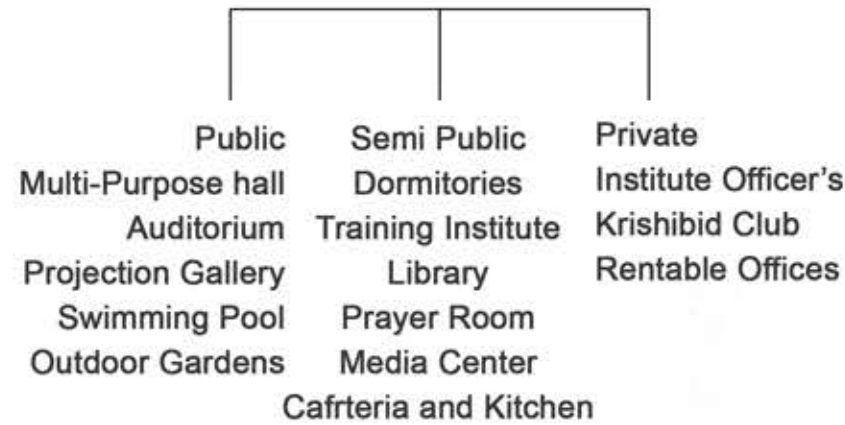


## Clear Spatial Sequence with Functional Clarity and Formal Geometry

Functions divided in 3 major groups were distributed according to use by placing more public functions in South block and lesser ones in the North block. Clear pedestrian and vehicular access has been created with use of plaza and courtyards. Connection with adjacent Khamarbari complex was made through landscaping.



### Program Analysis KIB Complex

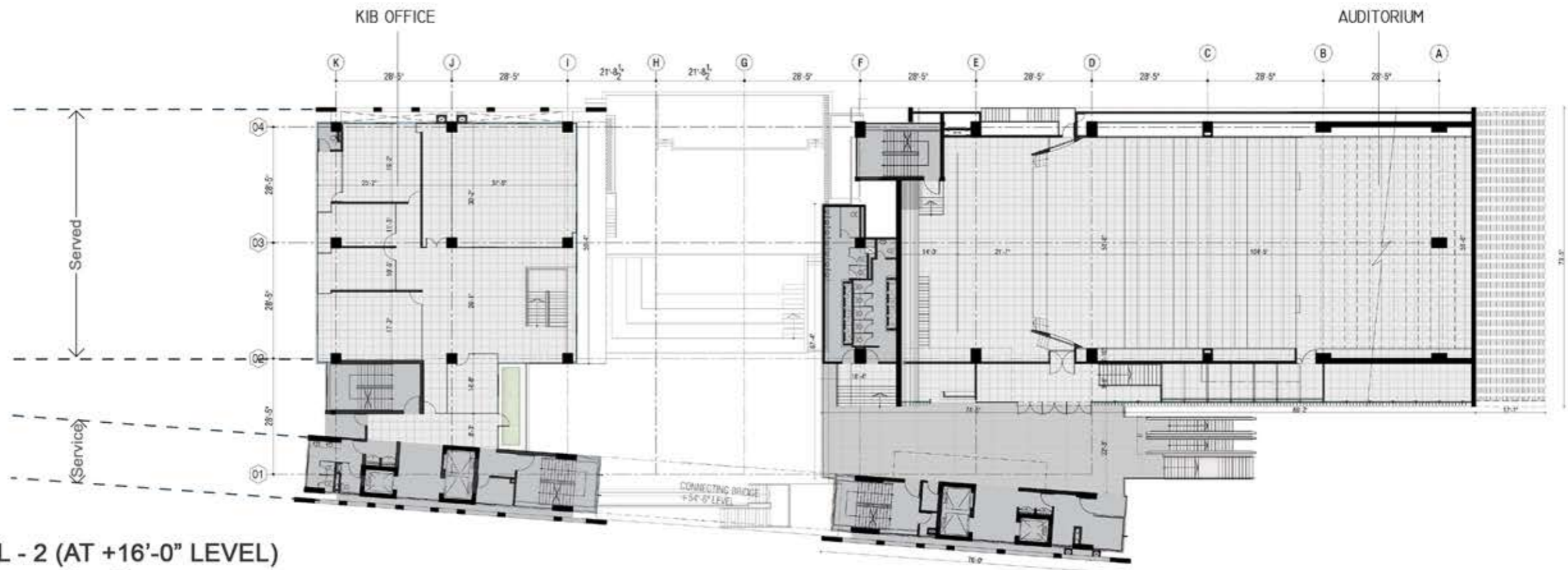


### The Context

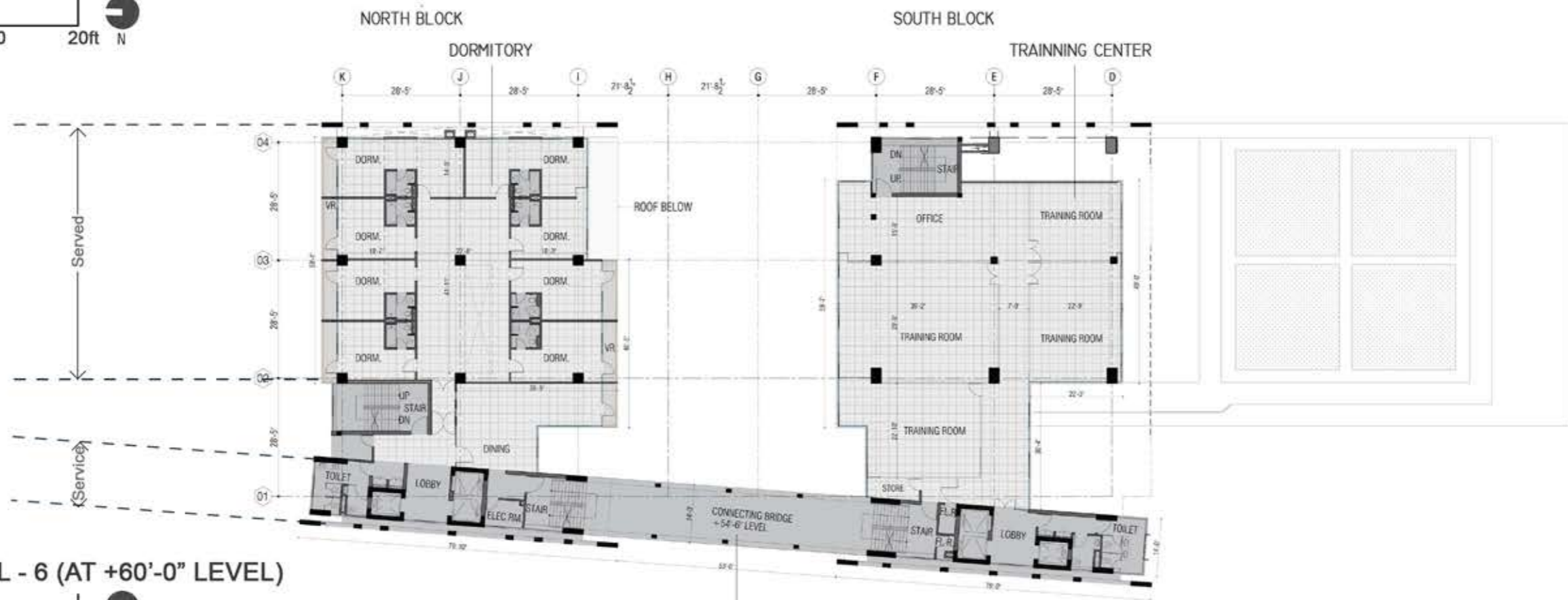
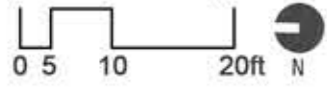
KIB is a clear shift from the practice of institutional building design in Bangladesh. It's inclusion of public plazas within environmental responsiveness and use of material puts it apart from its peers. Some examples of these types of buildings are shown here.



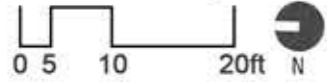


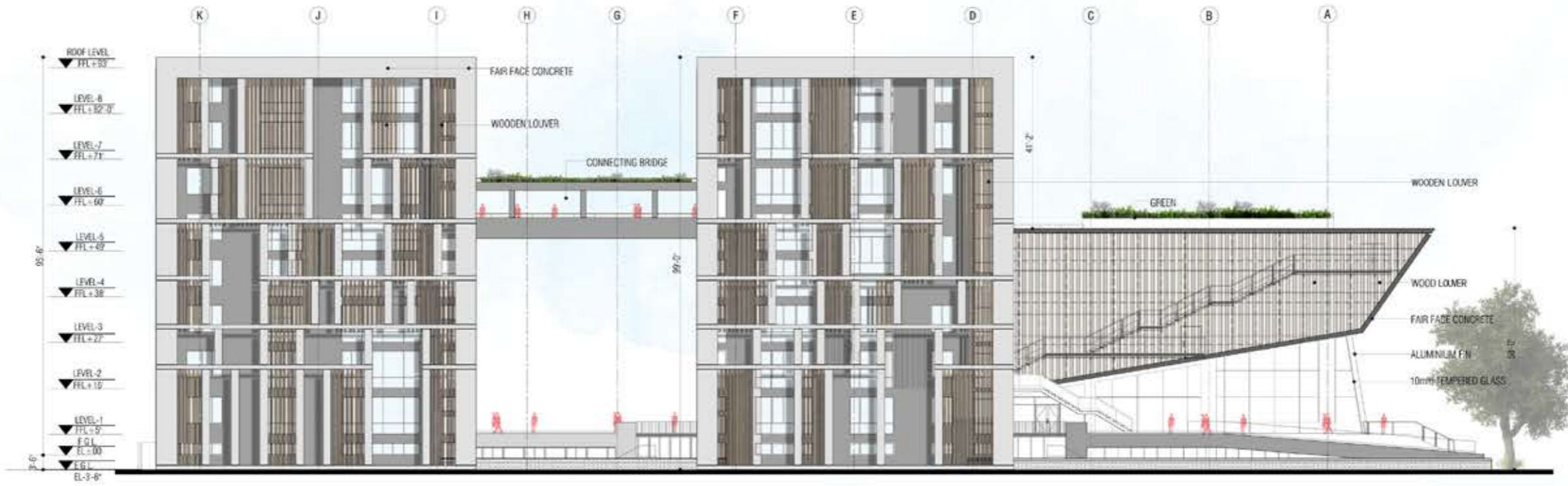


LEVEL - 2 (AT +16'-0" LEVEL)

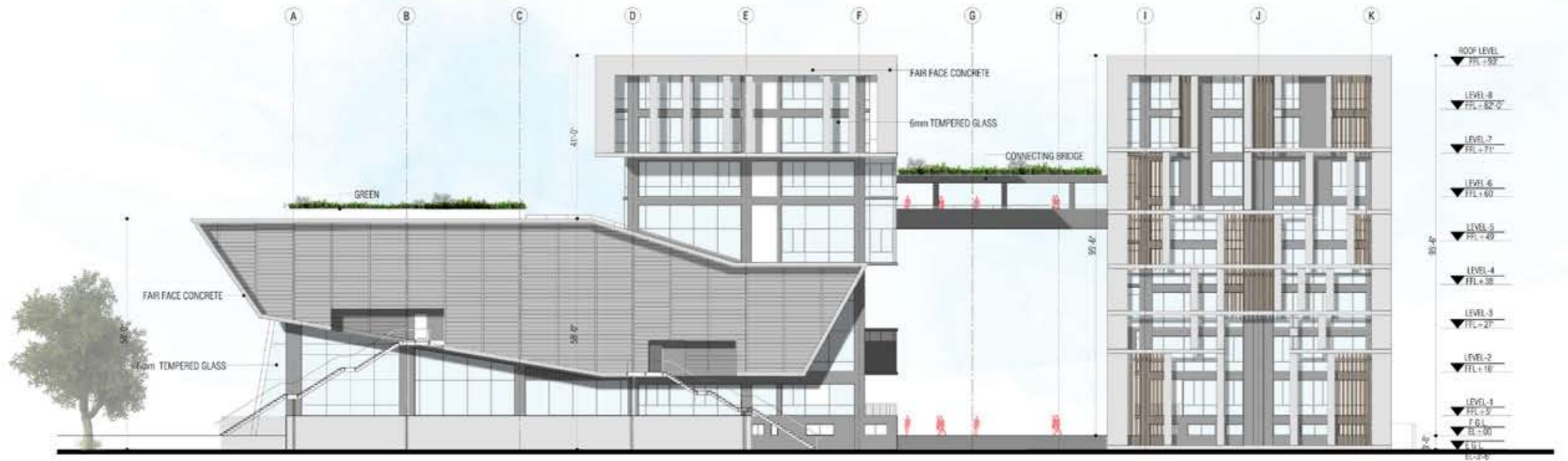


LEVEL - 6 (AT +60'-0" LEVEL)



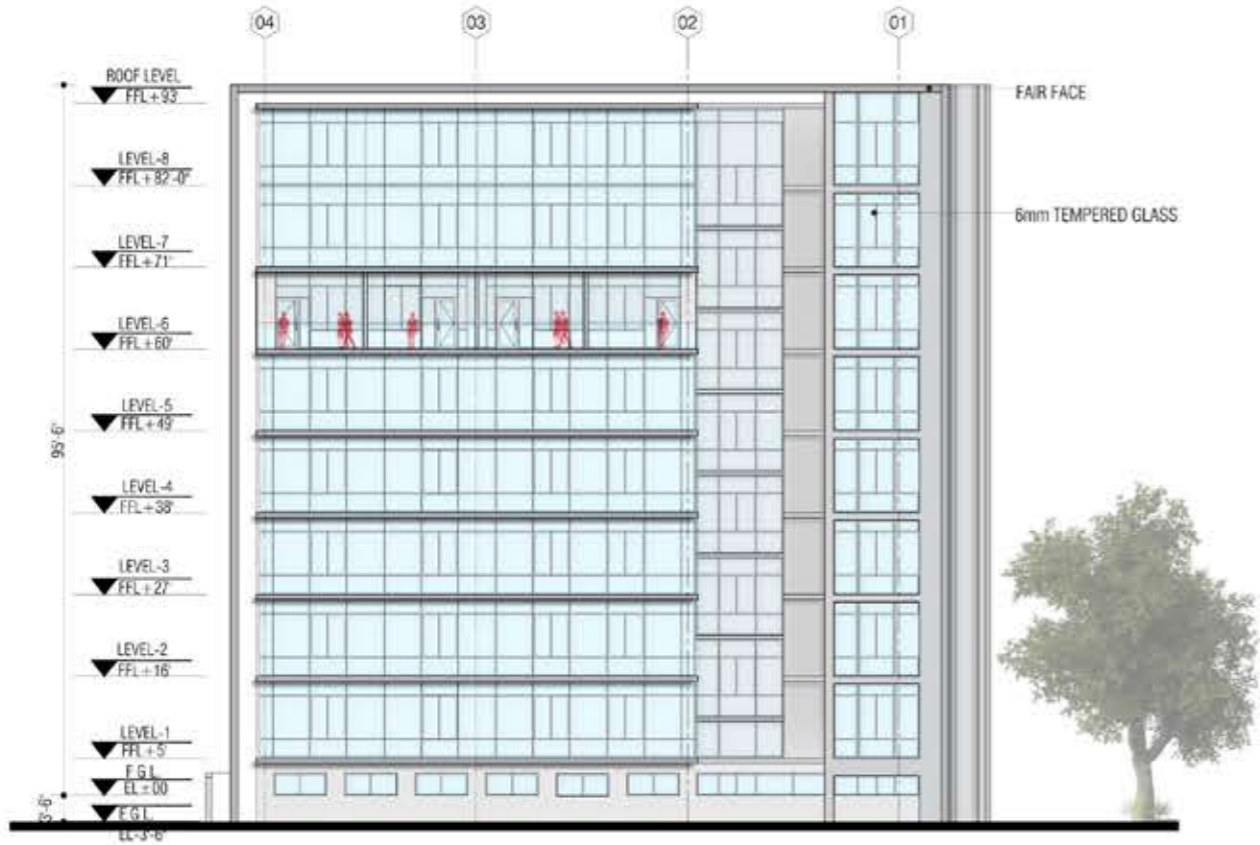


**WEST ELEVATION**

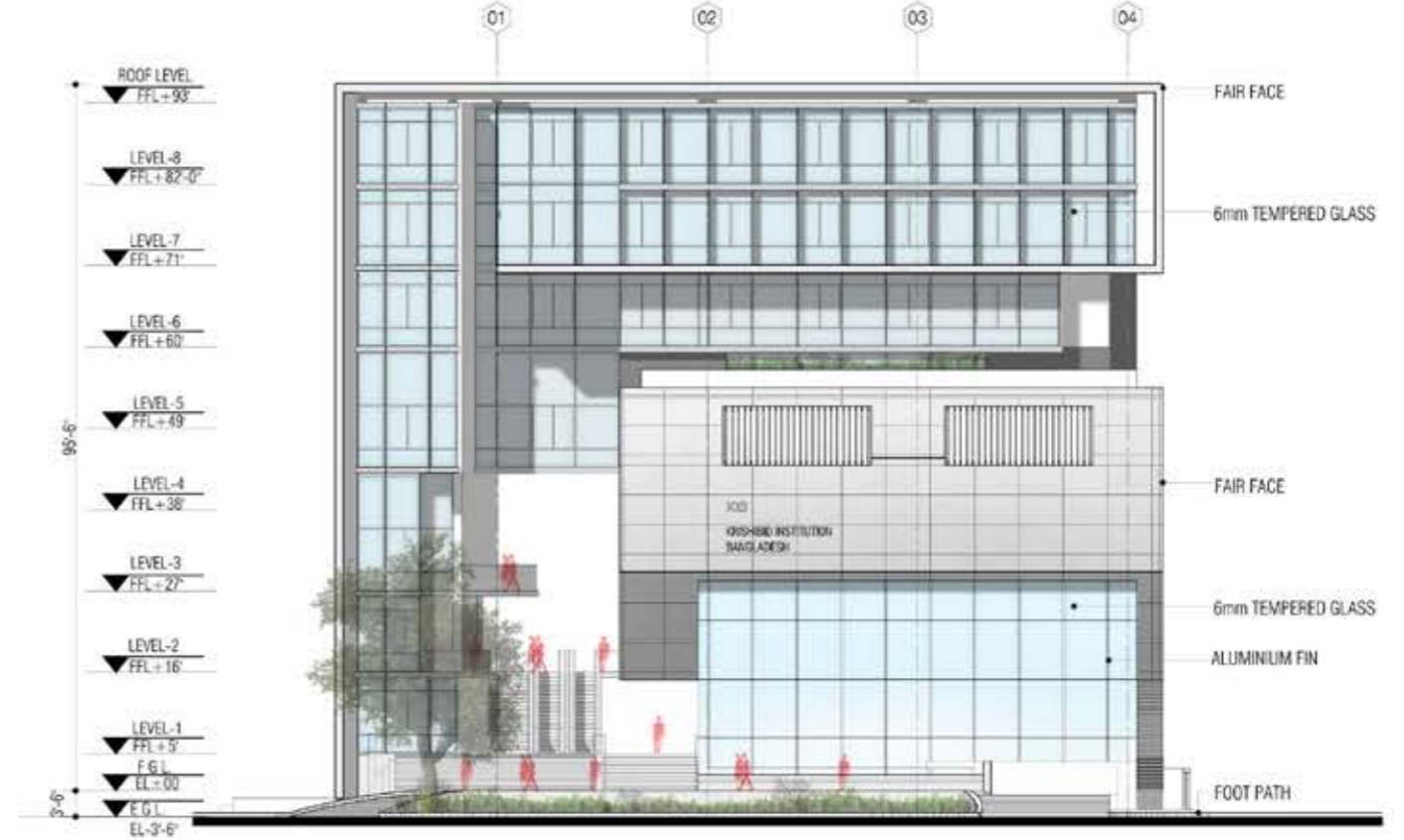


**EAST ELEVATION**





NORTH ELEVATION



SOUTH ELEVATION

